

GENERAL DRAWING NOTES: U.O.S.

- BREAK ALL CORNERS 0.030 RADIUS OR CHAMFER
- MACHINE ALL FILLETS 0.030 RADIUS
- ALL DIAMETERS CONCENTRIC -A-.005 TIR
- TURNED SURFACE FINISHES 63 RMS OR BETTER
- DRILLED OR BROACHED DETAILS 125 RMS OR BETTER
- DIM AND TOL SHALL BE HELD AFTER PLATING
- STAMP PART & WORK NUMBERS AS SHOWN
- DO NOT USE DRAWING IF MANUF. HOLD IS INITIALED

REVISION HISTORY - (MOST CURRENT REV. AT TOP)

REV	DATE	INIT.	NOTES:
3	4/19/04	MES	NEW LID DESIGN
2	3/12/04	MES	SLOT LASER ACCESS
1	1/23/04	MES	NEW ISSUE

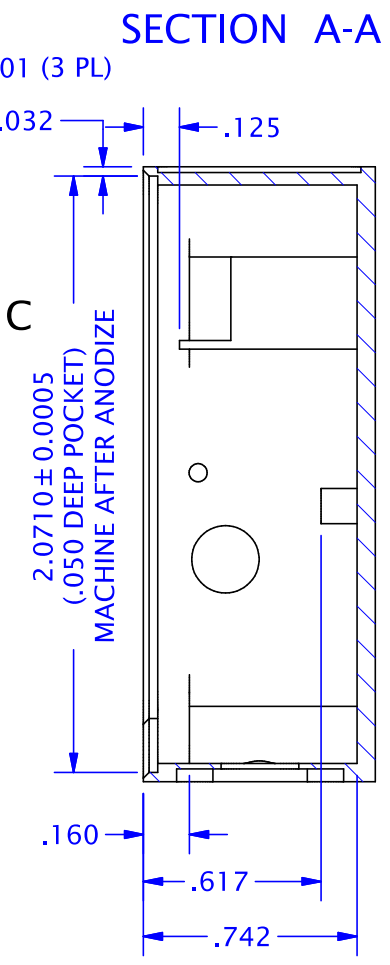
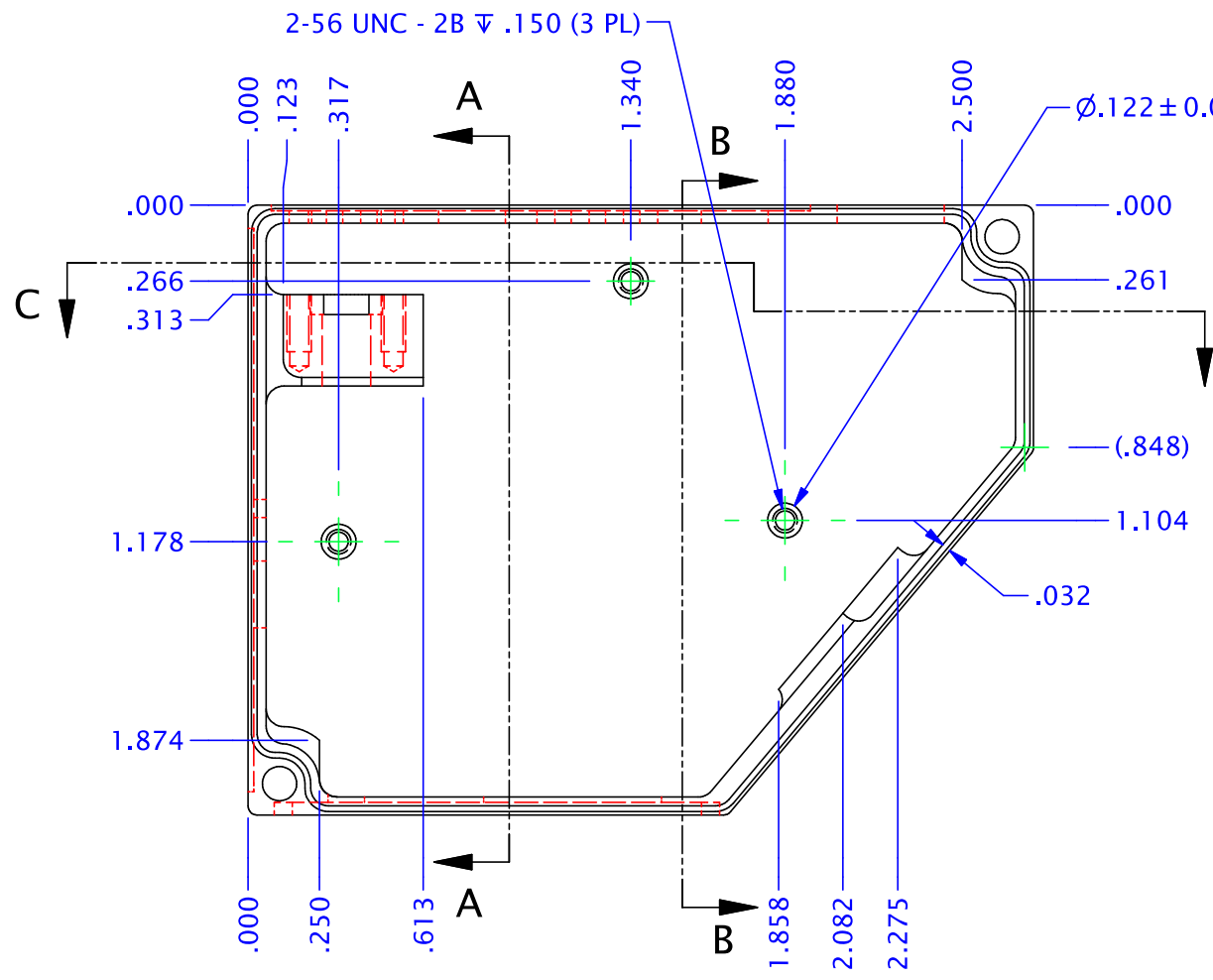
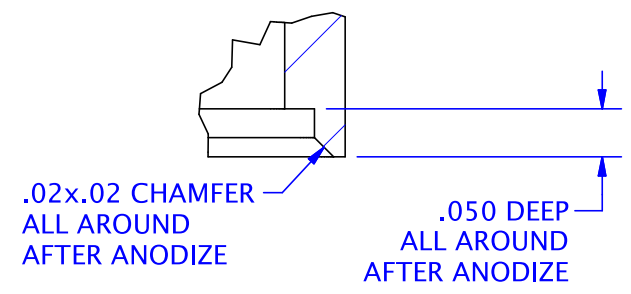
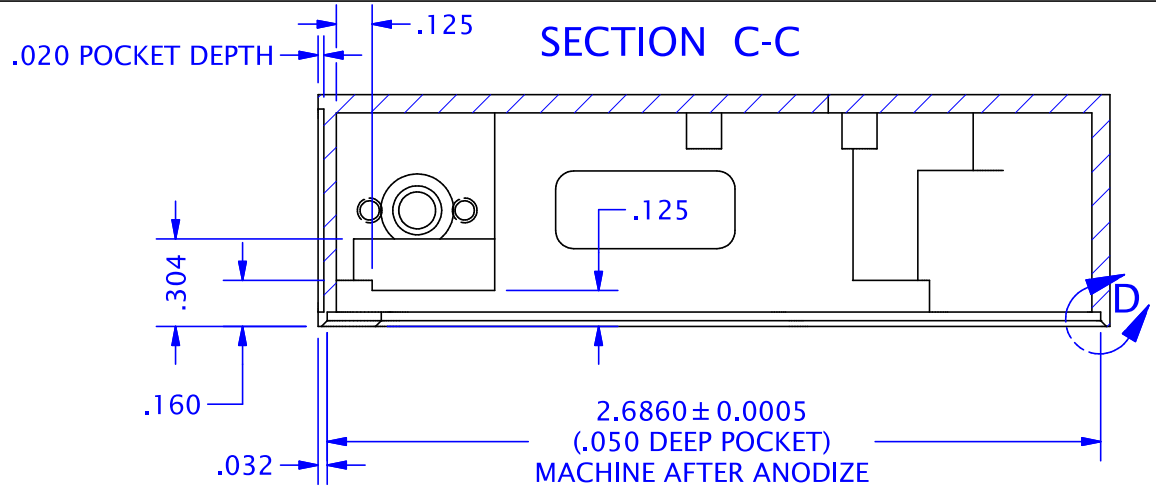
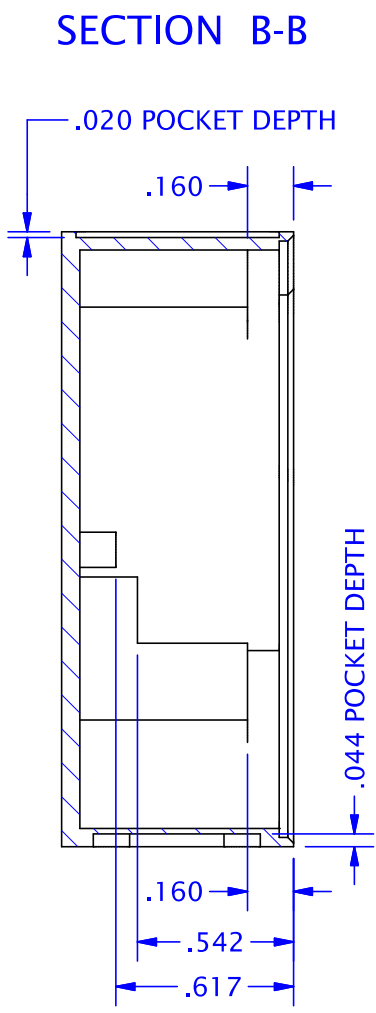
TOLERANCES: UNLESS OTHERWISE SPECIFIED
 X.XX = +/- 0.010 [X.XX] = +/- [0.05]
 X.XXX = +/- 0.005 [X.X] = +/- [0.1]
 ANGLES = +/- 1.0 DEG. [X] = +/- [0.3]
 SCALE: MATERIAL: Aluminum-6061
 NONE BEAD BLAST, BLACK ANODIZE

Do Not Scale Drawing

SCHMITT INDUSTRIES, INC. (SMS)
 2765 NW NICOLAI ST., PORTLAND, OR 97210
 TEL: (503) 227-7908 FAX: (503) 223-1258

PART: AR-200 SENSOR ENCLOSURE

NUMBER:	MCP694212	FILE:	MCP694212.ipt
DATE:	1/22/04	DRAWN BY:	MES
		MANF. HOLD:	
		HOLD DATE:	



GENERAL DRAWING NOTES: U.O.S.
 ● BREAK ALL CORNERS 0.030 RADIUS OR CHAMFER
 ● MACHINE ALL FILLETS 0.030 RADIUS
 ● ALL DIAMETERS CONCENTRIC -A, .005 TIR
 ● TURNED SURFACE FINISHES 63 RMS OR BETTER

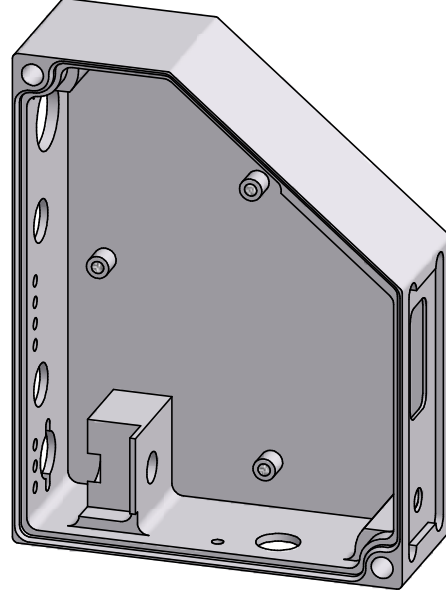
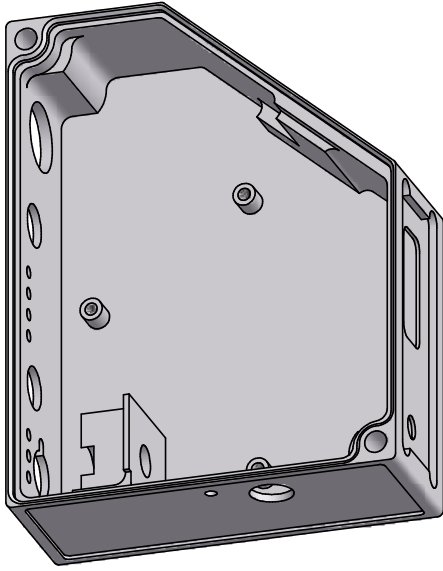
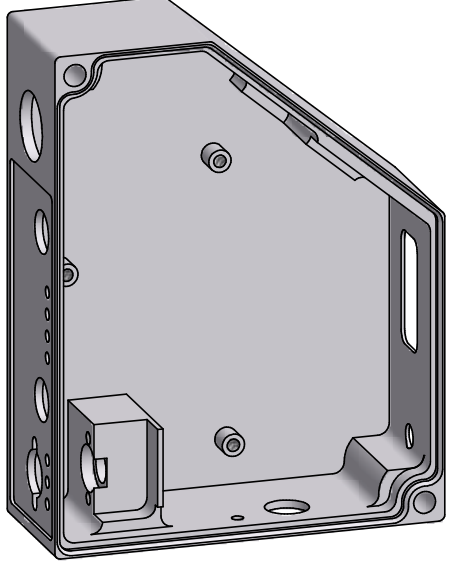
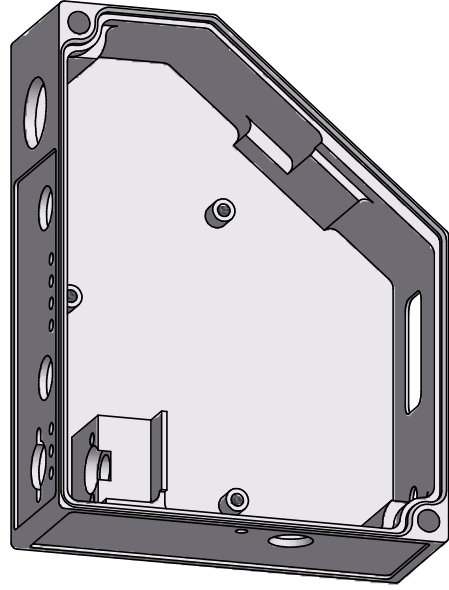
SCHMITT INDUSTRIES, INC. (SMS)
 2765 NW NICOLAI ST., PORTLAND, OR 97210
 TEL: (503) 227-7908 FAX: (503) 223-1258

PART: AR-200 SENSOR ENCLOSURE		FILE: MCP694212.ipt	SHEET: 2/3
NUMBER: MCP694212	DRAWN BY: MES	MANF. HOLD:	HOLD DATE:
DATE: 1/22/04			

REV	DATE	INIT.	NOTES:
3	4/19/04	MES	NEW LID DESIGN
2	3/12/04	MES	SLOT LASER ACCESS
1	1/23/04	MES	NEW ISSUE

TOLERANCES: UNLESS OTHERWISE SPECIFIED
 X.XX = +/- 0.010 [X.XX] = +/- [0.05]
 X.XXX = +/- 0.005 [X.X] = +/- [0.1]
 ANGLES = +/- 1.0 DEG. [X] = +/- [0.3]
 SCALE: MATERIAL: Aluminum-6061
 NONE BEAD BLAST, BLACK ANODIZE

Do Not Scale Drawing



GENERAL DRAWING NOTES: U.O.S.

- BREAK ALL CORNERS 0.030 RADIUS OR CHAMFER
- MACHINE ALL FILLETS 0.030 RADIUS
- ALL DIAMETERS CONCENTRIC -A- .005 TIR
- TURNED SURFACE FINISHES 63 RMS OR BETTER
- DRILLED OR BROACHED DETAILS 125 RMS OR BETTER
- DIM AND TOL SHALL BE HELD AFTER PLATING
- STAMP PART & WORK NUMBERS AS SHOWN
- DO NOT USE DRAWING IF MANF. HOLD IS INITIALED

REVISION HISTORY - (MOST CURRENT REV. AT TOP)

REV	DATE	INIT.	NOTES:
3	4/19/04	MES	NEW LID DESIGN
2	3/12/04	MES	SLOT LASER ACCESS
1	1/23/04	MES	NEW ISSUE

TOLERANCES: UNLESS OTHERWISE SPECIFIED

X.XX = +/- 0.010 [X.XX] = +/- [0.05]
 X.XXX = +/- 0.005 [X.X] = +/- [0.1]
 ANGLES = +/- 1.0 DEG. [X] = +/- [0.3]

SCALE: MATERIAL: Aluminum-6061
 NONE BEAD BLAST, BLACK ANODIZE

Do Not Scale Drawing

SCHMITT INDUSTRIES, INC. (SMS)
 2765 NW NICOLAI ST., PORTLAND, OR 97210
 TEL: (503) 227-7908 FAX: (503) 223-1258

PART: AR-200 SENSOR ENCLOSURE

NUMBER:	MCP694212	FILE:	MCP694212.ipt
DATE:	1/22/04	DRAWN BY:	MANF. HOLD: MES
			HOLD DATE:

SHEET:

3/3